



## General Purposes Committee

**Monday 22 January 2024 at 10.00 am**

Conference Hall - Brent Civic Centre, Engineers Way,  
Wembley, HA9 0FJ

Please note this will be held as a physical meeting which all Committee members will be required to attend in person.

**The meeting will be open for the press and public to attend or alternatively can be followed via the live webcast. The link to follow proceedings via the live webcast is available [HERE](#)**

### Membership:

#### Members

Councillors:

M Butt (Chair)  
Tatler (Vice-Chair)  
Donnelly-Jackson  
Farah  
Georgiou  
Grahl  
Knight  
Krupa Sheth

#### Substitute Members

Councillors:

Afzal, Akram, Crabb, Nerva, Rubin and Southwood  
  
Councillors:  
Lorber and Matin

**For further information contact:** Natalie Connor, Governance Officer  
Tel: 020 8937 1506, Email: [natalie.connor@brent.gov.uk](mailto:natalie.connor@brent.gov.uk)

For electronic copies of minutes and agendas please visit:  
[Council meetings and decision making | Brent Council](#)

## **Notes for Members - Declarations of Interest:**

If a Member is aware they have a Disclosable Pecuniary Interest\* in an item of business, they must declare its existence and nature at the start of the meeting or when it becomes apparent and must leave the room without participating in discussion of the item.

If a Member is aware they have a Personal Interest\*\* in an item of business, they must declare its existence and nature at the start of the meeting or when it becomes apparent.

If the Personal Interest is also significant enough to affect your judgement of a public interest and either it affects a financial position or relates to a regulatory matter then after disclosing the interest to the meeting the Member must leave the room without participating in discussion of the item, except that they may first make representations, answer questions or give evidence relating to the matter, provided that the public are allowed to attend the meeting for those purposes.

### **\*Disclosable Pecuniary Interests:**

- (a) **Employment, etc.** - Any employment, office, trade, profession or vocation carried on for profit gain.
- (b) **Sponsorship** - Any payment or other financial benefit in respect of expenses in carrying out duties as a member, or of election; including from a trade union.
- (c) **Contracts** - Any current contract for goods, services or works, between the Councillors or their partner (or a body in which one has a beneficial interest) and the council.
- (d) **Land** - Any beneficial interest in land which is within the council's area.
- (e) **Licences** - Any licence to occupy land in the council's area for a month or longer.
- (f) **Corporate tenancies** - Any tenancy between the council and a body in which the Councillor or their partner have a beneficial interest.
- (g) **Securities** - Any beneficial interest in securities of a body which has a place of business or land in the council's area, if the total nominal value of the securities exceeds £25,000 or one hundredth of the total issued share capital of that body or of any one class of its issued share capital.

### **\*\*Personal Interests:**

The business relates to or affects:

(a) Anybody of which you are a member or in a position of general control or management, and:

- To which you are appointed by the council;
- which exercises functions of a public nature;
- which is directed is to charitable purposes;
- whose principal purposes include the influence of public opinion or policy (including a political party of trade union).

(b) The interests a of a person from whom you have received gifts or hospitality of at least £50 as a member in the municipal year;

or

A decision in relation to that business might reasonably be regarded as affecting the well-being or financial position of:

- You yourself;
- a member of your family or your friend or any person with whom you have a close association or any person or body who is the subject of a registrable personal interest.

# Agenda

Introductions, if appropriate.

**Item** **Page**

**1 Apologies for absence and clarification of alternate members**

**2 Declarations of interests**

Members are invited to declare at this stage of the meeting, the nature and existence of any relevant disclosable pecuniary or personal interests in the items on this agenda and to specify the item(s) to which they relate.

**3 Deputations (if any)**

To hear any deputations requested by members of the public in accordance with Standing Order 67.

**4 Minutes of the previous meeting** 1 - 2

To approve the minutes of the previous meeting held on Monday 11 December 2023 as a correct record.

**5 Matters arising (if any)**

To consider any matters arising from the minutes of the previous meeting.

**6 Review of Polling Districts & Places** 3 - 22

To consider a report from the Corporate Director of Governance detailing the results of a Polling District and Place review undertaken prior to the London Mayoral and GLA elections in May 2024.

**7 Appointments to Sub-Committees / Outside Bodies**

No membership changes have been identified in advance of the agenda publication for consideration by the Committee.

## 8 Exclusion of Press and Public

No items have been identified in advance of the meeting that will require the exclusion of the press or public.

## 9 Any other urgent business

Notice of items to be raised under this heading must be given in writing to the Head of the Chief Executive and Member Services or her representative before the meeting in accordance with Standing Order 60.



- Please remember to set your mobile phone to silent during the meeting.
- The meeting room is accessible by lift and seats will be provided for members of the public. Alternatively, it will be possible to follow proceedings via the live webcast [HERE](#)



## LONDON BOROUGH OF BRENT

### MINUTES OF THE GENERAL PURPOSES COMMITTEE

Held in the Conference Hall, Brent Civic Centre on Monday 11 December 2023  
at 9:30am

PRESENT: Councillor M Butt (Chair), Councillor Tatler (Vice-Chair) and Councillors Donnelly-Jackson, Farah, Georgiou, Grahl, Knight and Krupa Sheth.

1. **Apologies for absence and clarification of alternate members**

There were no apologies for absence received.

2. **Declarations of interests**

There were no formal declarations of interest made during the meeting.

3. **Deputations (if any)**

There were no deputations received.

4. **Minutes of the previous meeting**

**RESOLVED** that the minutes of the previous meeting held on Wednesday 1 November 2023 be approved as an accurate record.

5. **Matters arising (if any)**

There were no matters arising.

6. **Council Tax Base 2024/25**

Councillor Tatler, Deputy Leader & Cabinet Member for Finance, Resources & Reform, introduced the report from the Corporate Director of Finance and Resources setting out the Council Tax base for 2024/25 in order to enable the Council to fulfil its statutory role under the Local Government Finance Act 1992 (as amended).

Members noted that calculation of the Tax Base was based on a formula involving two elements:

- a. the number of taxable properties shown as "Band D equivalents"; and
- b. the expected collection rate for the year.

In presenting the report, the Committee was advised that the calculation for the number of taxable properties had included an estimate for the number of new housing developments and demolitions anticipated across the borough.

In terms of the expected Council Tax collection rate, members were advised that over the years the collection rate had been adjusted to take in to account economic factors that had affected actual collection in-year and in the longer term. For 2021/22 the rate was lowered to account for the impact of COVID-19 on household's ability to pay and the postponement of normal debt recovery actions, it was also deemed prudent to further reduce the long term collection rate in 2022/23 to 97%. In 2023/24, this was held at 97% due to the expected impact of the cost-of-living crisis on the ability of households to pay council tax. The Medium Term Financial Strategy assumption for 2024/25 was for the long term collection target to increase back to 97.5% on the basis that the recovery from the Covid 19 pandemic and the return to normal debt recovery action would enable long term collections to increase back to pre-pandemic levels. This would be kept under review, with a further update provided to Cabinet in 2024.

Members recognised and supported the prudent nature of the assumptions being made and as a result, it was **RESOLVED**:

- (1) That the Band D equivalent number of properties be calculated, as detailed within the report, in accordance with the Government regulations.
- (2) That the collection rate for Council Tax for 2024/25 be set at 97.5%.
- (3) That subject to (1) and (2) above, a Council Tax Base for 2024/25 of 103,577 Band D equivalent properties (after collection rate allowance deduction) be approved.

#### **7. Appointments to Sub Committees & Outside Bodies**

There were no appointments to be considered in relation to any of the General Purposes Sub Committees.

#### **8. Exclusion of Press and Public**


There were no items that required the exclusion of the press or public from the meeting.

#### **9. Any Other Urgent Business**

None.

The meeting closed at 9:37 am.

COUNCILLOR MUHAMMED BUTT  
Chair

	<p align="center"><b>General Purposes Committee</b> 22 January 2024</p>
	<p align="center"><b>Report from the Corporate Director of Governance</b></p>
<p align="center"><b>Review of Polling Districts and Polling Places</b></p>	

<b>Wards Affected:</b>	All
<b>Key or Non-Key Decision:</b>	Not Applicable
<b>Open or Part/Fully Exempt:</b> <small>(If exempt, please highlight relevant paragraph of Part 1, Schedule 12A of 1972 Local Government Act)</small>	Open
<b>List of Appendices:</b>	<p>Three</p> <p>Appendix 1: Maps outlining the existing arrangements and proposed changes</p> <p>Appendix 2: Summary of the (acting) Returning officer's proposal</p> <p>Appendix 3: Comments received in response to the proposal</p>
<b>Background Papers:</b>	None
<b>Contact Officer(s):</b> <small>(Name, Title, Contact Details)</small>	<p>Matt Rae, Electoral Services Manager 020 8937 2612 Email: <a href="mailto:matt.rae@brent.gov.uk">matt.rae@brent.gov.uk</a></p> <p>Amira Nassr, Head of Chief Executive and Members Services 020 8937 5436 Email: <a href="mailto:amira.nassr@brent.gov.uk">amira.nassr@brent.gov.uk</a></p>

## 1.0 Executive Summary

- 1.1 In accordance with the Electoral Registration and Administration Act 2013, every local authority in England and Wales must undertake and complete a review of all polling districts and polling places in its area within a 16-month period commencing from 1 October 2023 to 31 January 2025. A review, triggered by the Local Boundary Commission for England took place in 2021 with changes effective for the May 2022 elections. A similar review therefore took place recently.

## **2.0 Recommendation(s)**

- 2.1 To note that a review of the Polling Districts, Polling Places and Polling Stations of the London Borough of Brent has taken place. The recommendations resulting from this are included in this report.
- 2.2 To note that the consultation on the review findings took place between 30 October and 8 December 2023. As part of the review representations were sought from all elected representatives for Brent, the (Acting) Returning Officer for the London Borough of Harrow, the (Acting) Returning Officer for Westminster City Council, the Brent Disability Forum, members of the public and all existing polling stations.
- 2.3 To note feedback from these has been taken into account when making the recommendations.
- 2.4 To agree the recommendations set out in 2.6 in this report to be effective from the publication of the revised electoral register on 1 February 2024.
- 2.5 To delegate to the Chief Executive designation of alternative polling places in the event of any polling place not being available at any election or better provision being identified, following consultation with the Party Whips and respective ward councillors.
- 2.6 Summary of recommendations:

### **Alperton Ward:**

- 2.6.1 It is recommended that polling district AL4 be moved to Lyon Park School from the Grand Union Community Hub. Polling district AL3 will remain at the Grand Union Community Hub. The polling district boundary to be amended so that AL3 will incorporate the residents of the St Georges, Grand Union area.

### **Kingsbury Ward:**

- 2.6.2 It is recommended that the polling station currently located at KY1 Village School be moved to Kingsbury Service Club.

### **Queensbury Ward:**

- 2.6.3 It is recommended that polling district QY2 be split and allocated to QY1.

### **Sudbury Ward:**

- 2.6.4 It is recommended that the Sudbury Baptist church be used and a new polling district created.



### **Wembley Central Ward:**

- 2.6.5 It is recommended that a new polling location is identified for polling district WC3. Further options are currently be explored. Polling district WC4 will remain at Ealing Road Library.

### **Wembley Hill Ward:**

- 2.6.6 It is recommended that the polling locations remain the same.

### **Willesden Green:**

- 2.6.7 It is recommended that that polling locations remain the same. However, a minor amendment to be made to the WN2 and WN3 boundary.

## **3.0 Detail**

### **3.1 Contribution to Borough Plan Priorities & Strategic Context**

- 3.1.1 The Polling District, Polling Places and Polling Station review aligns with a number of the Borough Plan priorities, ensuring that our communities are given a fair opportunity to vote.

### **3.2 Background**

- 3.2.1 The Electoral Registration and Administration Act 2013 requires each electoral registration authority in England, Scotland and Wales to carry out a review of both its polling district boundaries and its polling places every five years. Members are asked to make a decision on new electoral arrangements in time for any changes to be incorporated into the Revised Register for Brent being republished on 1 February 2024.

- 3.2.2 Polling districts, polling places and polling stations may be defined as follows:

A **polling district** is a geographical sub-division of an electoral area, i.e. a UK Parliamentary constituency, a ward or an electoral division.

A **polling place** is a geographical area in which a polling station is located. However, as there is no legal definition of what a polling place is, the geographical area usually defined as the premises inside which voting takes place.

A **polling station** is the actual area where the process of voting takes place and must be located within the polling place designated for the particular polling district.

- 3.2.3 The Council is required to give notice of the review and to consult with interested parties, including organisations with a particular interest and expertise in advising on access to buildings for people with different types of disability.

### **Alperton Ward**

- 3.2.4 Grand Union Hub was extremely busy at the last local election. Moving AL4 to vote at Lyon Park Primary School will ease congestion in the Grand Union Hub. The polling district line will also be redrawn between AL3 and AL4 so that the polling location for residents of St Georges, Grand Union will remain the Grand Union Hub. There are currently no adequate polling locations nearer to the Abbey Estate in AL3 so this is the only alternative at present. It is hoped that Abbey Estate Community Centre, which has plans to be refurbished, could be used in the future.

### **Kingsbury Ward**

- 3.2.5 A request was made by the Village School not to be used as a polling station. As a Special Educational Needs school, parents find it difficult to find childcare when the school closes on polling day. An alternative venue has been found with the Kingsbury Service Club. The venue has adequate space, is accessible with plenty of parking and is close to the school.

### **Queensbury Ward**

- 3.2.6 Representations were made to move all electors from the portacabins in QY1 to Queensbury Methodist Church. Whilst we recognise that portacabins are not the most desirable polling stations, doing so, would mean far too many electors in one location. The recommendation, therefore, is to split the ward with the electors in the vicinity of the portacabin continuing to vote in that location and the electors west of Stag Lane to vote at Queensbury Methodist Church. The new polling district boundary will run down Stag Lane and the previous boundary running down Waltham Drive and Wimborne Drive will be removed. This will remove the need for one of the portacabins, reduce costs and provide an alternative polling station for residents that is closer by.

### **Sudbury Ward**

- 3.2.7 Representations were made to use Sudbury Baptist Church and create a new polling district. Feedback from the 2022 local elections was that there was confusion from voters south of the underground line about what polling station they were voting at. It is proposed that Sudbury Methodist Church remains as a polling station and a new polling district created south of the underground line and Sudbury Baptist Church be used as an additional polling station. The Baptist Church has been used in previous years.

### **Wembley Central Ward**

- 3.2.8 Feedback from the 2022 local elections indicates that Ealing Road Library was very busy. The polling location took on both polling districts of WC3 and WC4 meaning it had a very large electorate, which currently stands at just over 7,000. Exploration of additional polling stations to service the WC3 district is currently underway.

## **Wembley Hill Ward**

- 3.2.9 Representations were made to find a new Polling location in the Northwest of the ward as it was felt the current polling location was too far for some electors. However, with much of that area being residential, no suitable locations have been identified. Wembley Primary school was considered but this is very close to the current polling location of St Augustine's Church Hall. We will continue to explore other options.

## **Willesden Green Ward**

- 3.2.10 Representations were made to move to the new Brent Indian Community Centre. The centre is still undergoing building work which is due for completion in March. It is therefore proposed that this be reviewed again after the GLA election when the centre is operational and a site visit has been made.
- 3.2.11 Representation was also made for a minor amendment to the polling district boundary for five properties to be moved from WN2 to WN3 so that all properties on Park Avenue North are in one polling district, which was accepted.

## **4.0 Stakeholder and ward member consultation and engagement**

- 4.1 As outlined above, the consultation period ran from 30 October to 8 December 2023. Notice of the consultation was sent to all members of the Council. All existing and proposed polling stations were contacted. Disability groups that are members of Brent Disability Forum were also contacted. In addition, the consultation was publicised through the Council's webpage.

## **5.0 Financial Considerations**

- 5.1 The cost of Council elections and by-elections is met by the local authority. For all other elections, funding is provided either by the government or the Greater London Authority.
- 5.2 Any increase in the number of polling stations would incur additional costs in terms of building hire, equipment and polling station staff. The cost incurred from using Council maintained buildings is limited to covering heating, lighting and cleaning costs. These costs are met by the Council only when used for Council elections or by-elections.
- 5.3 The proposed changes outlined above are not expected to lead to any significant change in the overall cost of running individual elections, due to the limited timespan over which elections are held.

## **6.0 Legal Considerations**

- 6.1 The Council has a duty under the Representation of the People Act 1983 (RPA 1983) to divide its area into polling districts for parliamentary elections, to designate a polling place for each polling district, and to keep these under

review. In doing so, the Council must give all electors such reasonable facilities for voting as are practicable in the circumstances.

6.2 The review referred to in this report is a legal requirement under the Electoral Administration Act 2013.

## **7.0 Equality, Diversity & Inclusion (EDI) Considerations**

7.1 Under Section 149 of the Equality Act 2010, the Council has a duty when exercising their functions to have 'due regard' to the need:

- a) To eliminate unlawful discrimination, harassment and victimisation and other conduct prohibited under the Act;
- b) Advance equality of opportunity; and
- c) Foster good relations between those who share a "protected characteristic" and those who do not.

7.2 This is the Public Sector Equality Duty (PSED). The 'protected characteristics' are: age, disability, gender reassignment, pregnancy and maternity, marriage and civil partnership, race, religion or belief, sex, and sexual orientation.

7.3 The purpose of the duty is to enquire into whether a proposed decision disproportionately affects people with a protected characteristic. In other words, the indirect discriminatory effects of a proposed decision. Due regard is the regard that is appropriate in all the circumstances.

7.4 The purpose of the polling district and polling places review is to ensure that no elector is discouraged from voting because of any inconvenience placed in their way by the choice of polling station location in their area.

7.5 One of the key considerations for the proposed changes is around accessibility for different protected characteristics, that is, ensuring that access to the polling stations is equal for everyone. It is in the local authority's best interest to ensure the polling approach maximises participation, therefore it is already part of normal procedure to ensure the polling places are accessible - for example, in relation to the location of the polling place and within premises where the voting takes place. Additionally, the report demonstrates through the proposals how Brent is seeking to make changes to improve accessibility based on the stakeholder feedback.

## **8.0 Climate Change and Environmental Considerations**

8.1 The council declared a climate and ecological emergency in 2019 and set out to do all in its gift to become carbon neutral on a borough-wide basis by 2030.

8.2 Electors being within walking distance of a polling location is a consideration. However, all benefits have to be weighed up when selecting a polling location to ensure the accessibility of premises for all electors is taken into consideration.

8.3 Polling staff should be reminded of the council's climate change objectives as part of their training, in particular to minimise any excessive energy use at polling stations, recycle correctly and to encourage support staff to travel to and from their polling station via sustainable modes of transport (walking, cycling, public transport) or electric vehicle where possible. It is acknowledged that polling station managers and inspectors typically require car usage in order to transport equipment and ballot papers safely and securely.

## **9.0 Human Resources/Property Considerations**

9.1 There are no direct human resources or property implications.

## **10.0 Communication Considerations**

10.1 Any changes to polling districts or polling location would be communicated to electors on their poll card as well as other comms channels encouraging electors to check their polling location.

**Report sign off:**

***Debra Norman***

Corporate Director of Governance

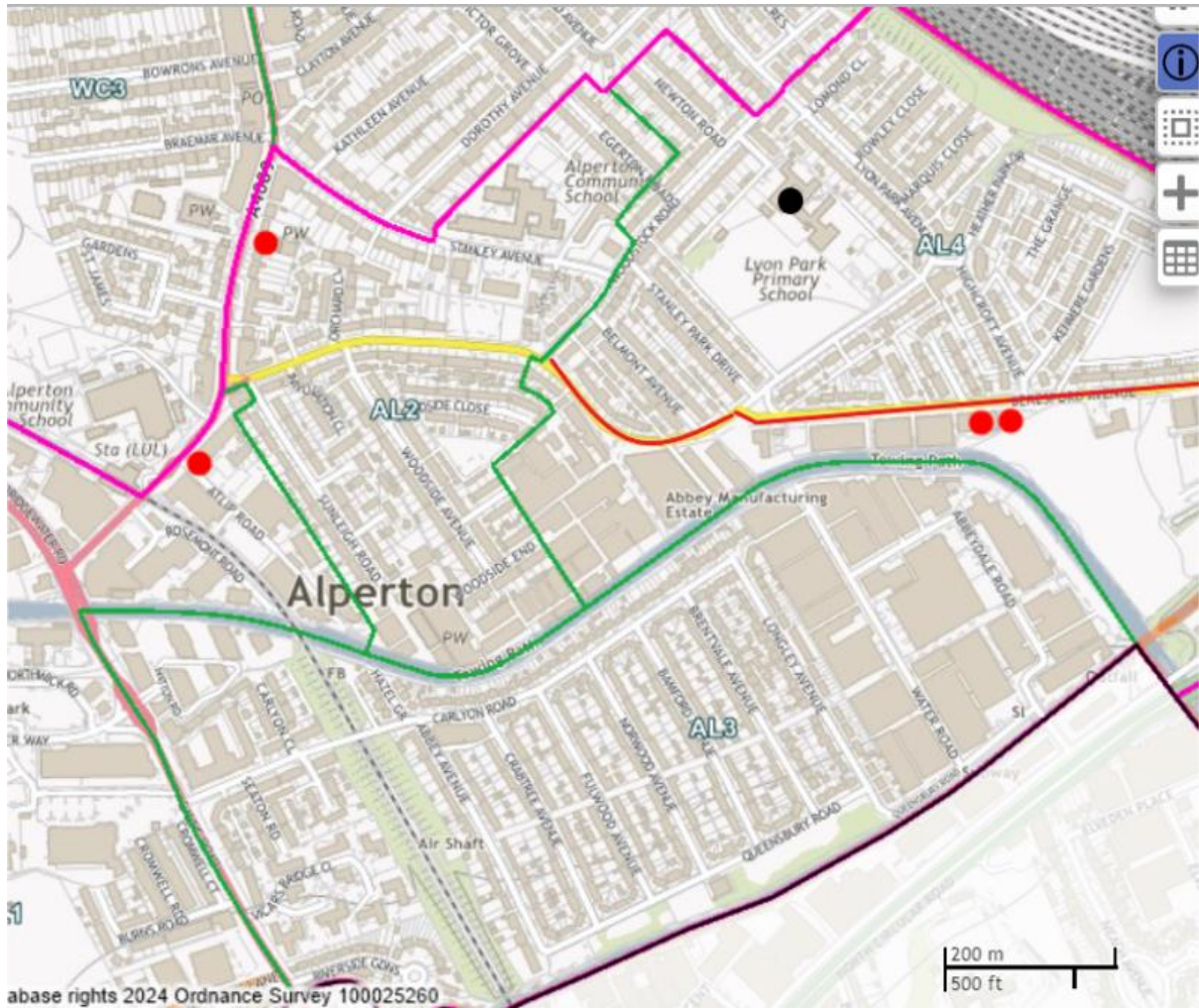
This page is intentionally left blank

## Appendix 1: Maps of Proposed Changes

### Alperton Ward

Red line indicates new proposed polling district boundary.

Black dot indicates new polling location (Lyon Park Primary School)

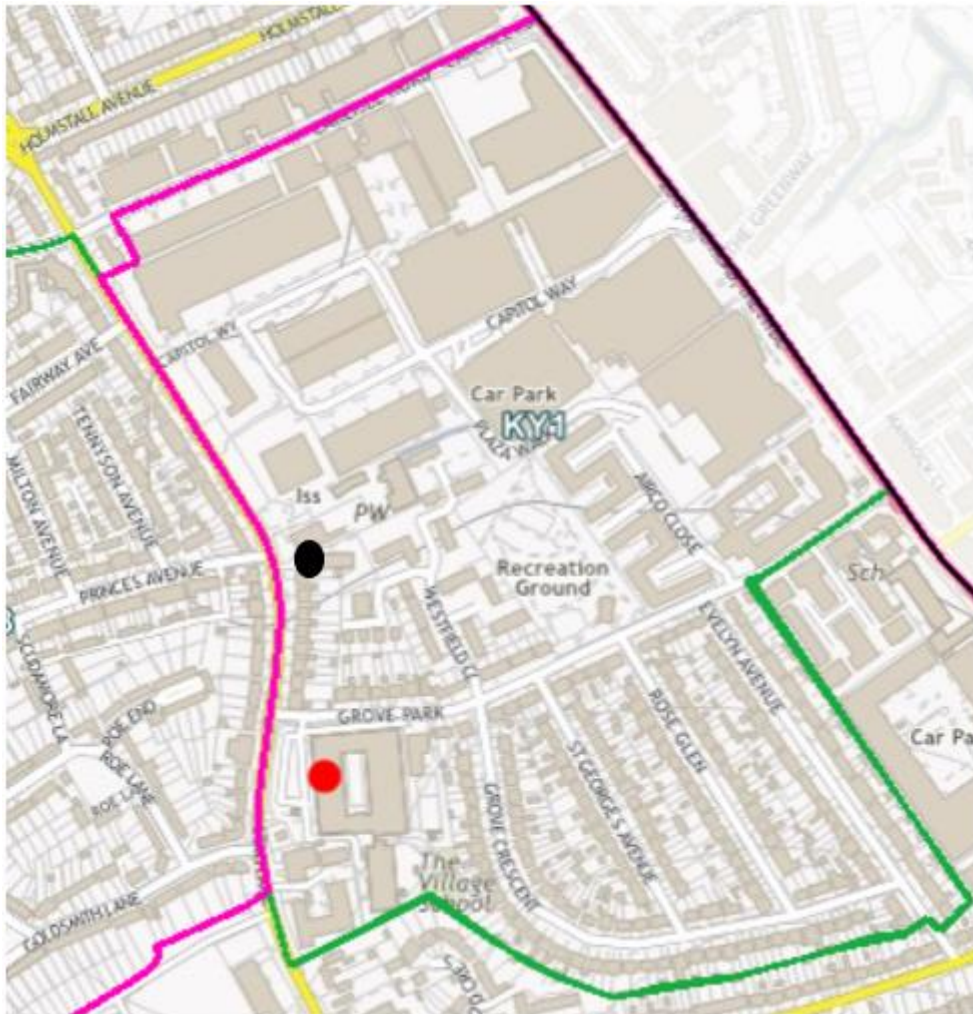




## Kingsbury Ward

Red dot indicates current polling location (The Village School)

Black dot indicates new polling location (Kingsbury Service Club)





## Queensbury Ward

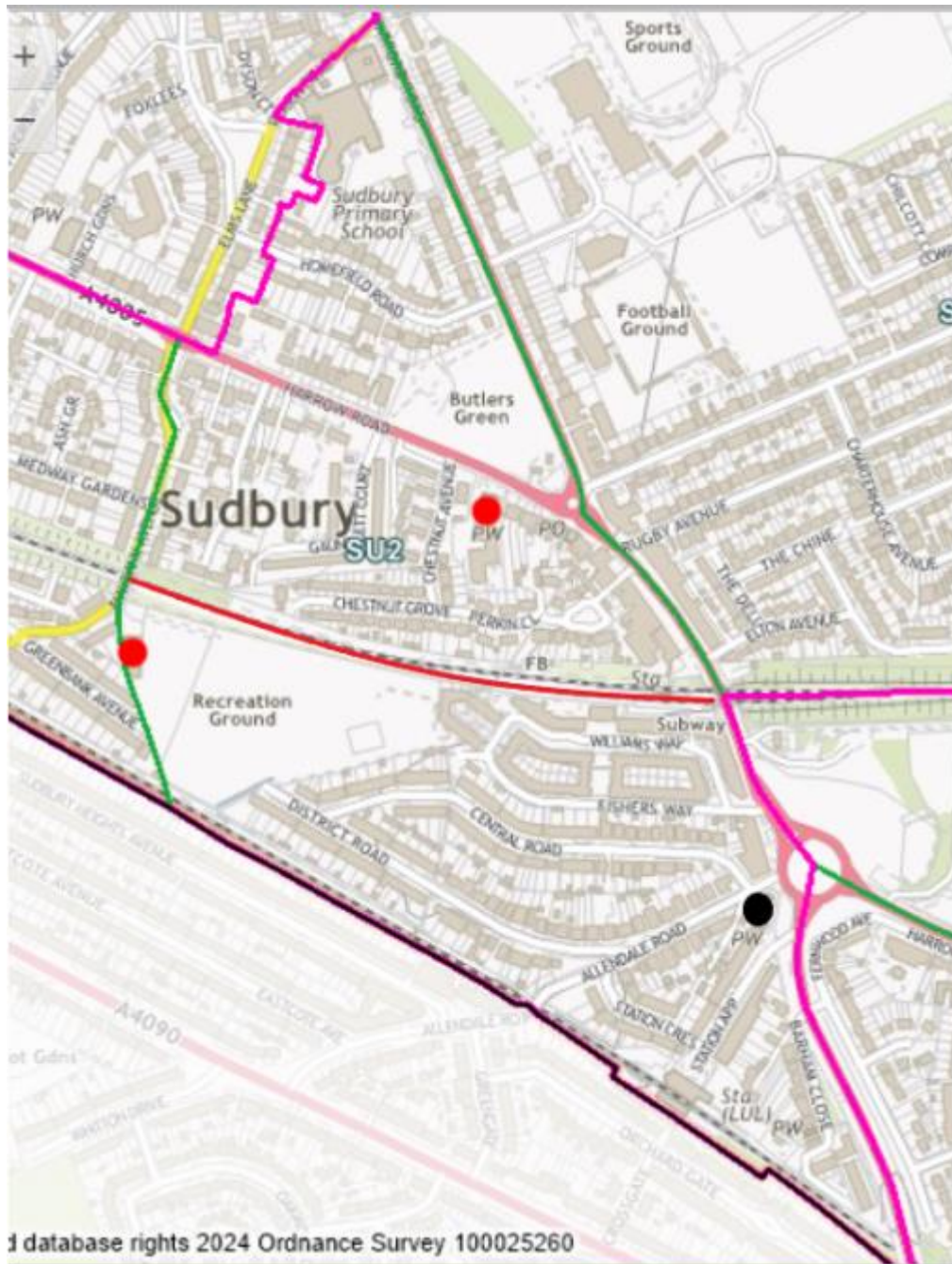
Red line indicates new proposed polling district boundary. Replacing green line adjacent.



## Sudbury Ward

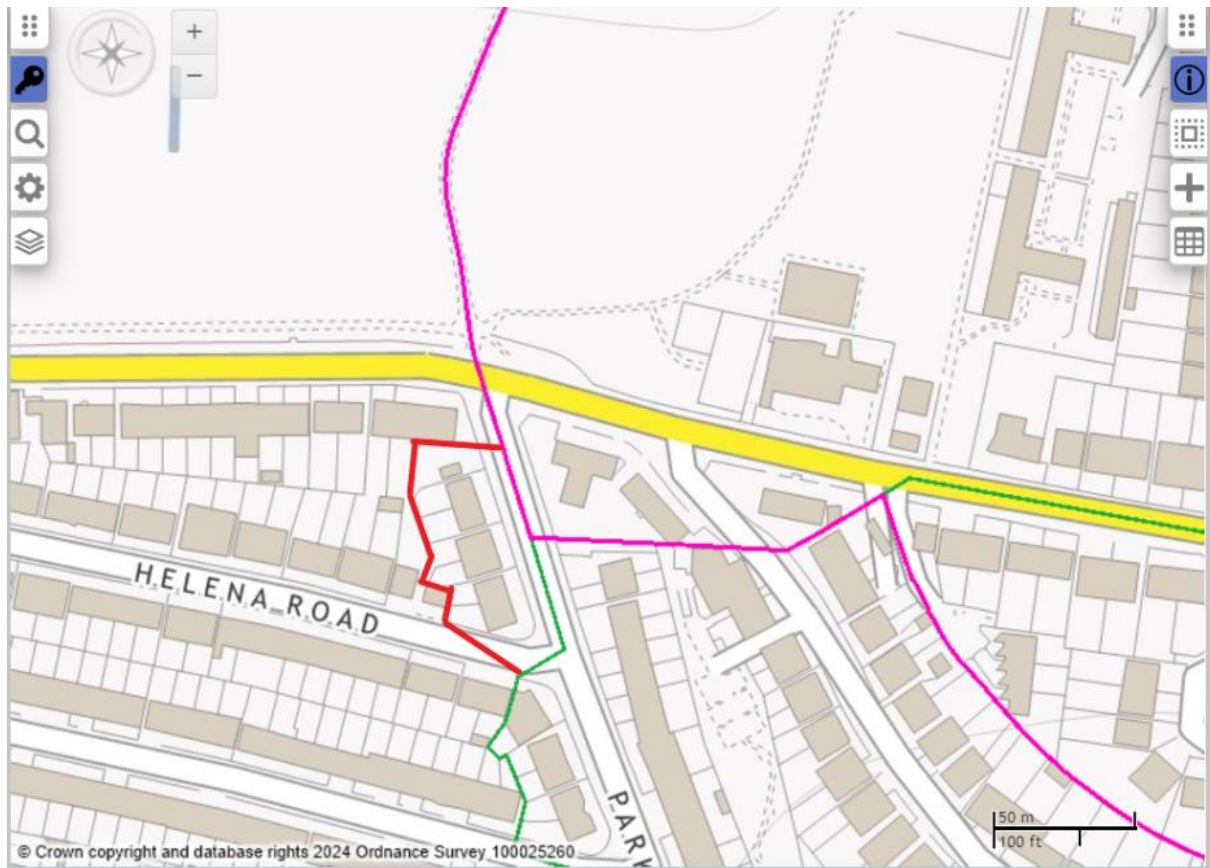
Red line indicates new proposed polling district boundary.

Black dot indicates new polling location (Sudbury Baptist Church)



## Willesden Green Ward

Red line indicates minor amendment to polling district boundary.



This page is intentionally left blank

Ward	Polling district code	Polling Place	Recommendation
Alperton	AL1	Church of God of Prophecy	No Change
Alperton	AL2	Alperton Baptist Church Hall	No Change
Alperton	AL3	St George: Grand Union, Community Hub	Change ( refer to section 3 of cover report)
Alperton	AL4	St George: Grand Union, Community Hub	Change (refer to section 3 of cover report)
Barnhill	BA1	Church of The Ascension Parish Hall	No Change
Barnhill	BA2	Hut outside 15 Kings Drive	No Change
Barnhill	BA3	English Martyrs Church Hall	No Change
Barnhill	BA4	Chalkhill Primary School, Nursery Unit	No Change
Brondesbury Park	BP1	The Library at Willesden Green	No Change
Brondesbury Park	BP2	Stember Hall Scouts Hut	No Change
Brondesbury Park	BP3	Queens Park Community School	No Change
Brondesbury Park	BP4	The Refectory, Christ Church with St Lawrence Brondesbury	No Change
Brondesbury Park	BP5	Brondesbury Bowling Club	No Change
Cricklewood & Mapesbury	CM1	Mora Primary School	No Change
Cricklewood & Mapesbury	CM2	Cricklewood Baptist Church Hall	No Change
Cricklewood & Mapesbury	CM3	St Gabriel's Hall	No Change
Cricklewood & Mapesbury	CM4	Watling Gardens Community Centre	No Change
Dollis Hill	DH1	Hut on Crispian Close Car Park	No Change
Dollis Hill	DH2	St Catherine's Church	No Change
Dollis Hill	DH3	Braintcroft E-ACT Primary Academy	No Change
Dollis Hill	DH4	Kingfisher Community Centre	No Change
Dollis Hill	DH5	Our Lady of Grace Catholic Junior School	No Change
Dollis Hill	DH6	Our Lady of Grace Catholic Infant School	No Change
Harlesden & Kensal Green	HK1	Harlesden Primary School	No Change
Harlesden & Kensal Green	HK2	John Keble C of E Primary School	No Change
Harlesden & Kensal Green	HK3	All Souls Church Hall	No Change
Harlesden & Kensal Green	HK4	Furness Primary School	No Change
Harlesden & Kensal Green	HK5	Newman Catholic College	No Change
Harlesden & Kensal Green	HK6	St Mark's Church Hall, Kensal Rise	No Change
Kenton	KE1	Hut opposite 86 Northwick Avenue	No Change
Kenton	KE2	Hut in Harrow District Masonic Centre	No Change
Kenton	KE3	Children's Centre, Mount Stewart School	No Change
Kenton	KE4	Uxendon Manor Primary School	No Change
Kenton	KE5	Lindsay Park Baptist Church	No Change
Kenton	KE6	Preston & Mall Youth & Community Centre	No Change
Kilburn	KI1	Christchurch (Brondesbury) CE School	No Change
Kilburn	KI2	Kilburn Square Housing Co-Op	No Change
Kilburn	KI3	Brent Hubs Kilburn	No Change
Kilburn	KI4	Marian Community Centre, Immaculate Heart of Mary Church	No Change
Kingsbury	KY1	The Village School	Change (refer to section 3 of cover report)
Kingsbury	KY2	Father O'Callaghan Centre	No Change
Kingsbury	KY3	Oliver Goldsmith Primary School	No Change
Northwick Park	NP1	Northwick Park Sports Pavilion	No Change
Northwick Park	NP2	Byron Court Primary School	No Change
Northwick Park	NP3	Sudbury Court Sports Club (Sudbury Court Pavilion)	No Change
Northwick Park	NP4	St Cuthbert's Church Hall	No Change
Northwick Park	NP5	St George's Parish Centre, Church Hall	No Change
Preston	PR1	Preston Park Primary School	No Change
Preston	PR2	Century Bowling & Sports Club	No Change
Preston	PR3	Wembley Christian Centre	No Change
Queens Park	QP1	Kensal Rise Library	No Change
Queens Park	QP2	Manor School	No Change
Queens Park	QP3	Moberly Sports Centre	No Change
Queens Park	QP4	Kilburn Library	No Change
Queensbury	QY1	Queensbury Methodist Church	Change (refer to section 3 of cover report)
Queensbury	QY2	Hut outside the Arch Climbing Wall	Change (refer to section 3 of cover report)
Queensbury	QY3	Roe Green Primary School	No Change
Queensbury	QY4	White Cross Hall	No Change
Queensbury	QY5	Kingsbury Library Plus	No Change
Roundwood	RW1	Church End & Roundwood Unity Centre	No Change

Roundwood	RW2	St Joseph's RC Primary School	No Change
Roundwood	RW3	Leopold Primary School - Hawkshead Road	No Change
Roundwood	RW4	St Mary's Willesden Parish Church	No Change
Roundwood	RW5	King's Hall Community Centre	No Change
Stonebridge	ST1	St Raphael's Children Centre	No Change
Stonebridge	ST2	Mitchell Brook Primary School	No Change
Stonebridge	ST3	Brentfield Primary School	No Change
Stonebridge	ST4	Leopold Primary School - Gwenneth Rickus	No Change
Stonebridge	ST5	Brent Hub Community Enterprise Centre	No Change
Stonebridge	ST6	Filipino International Church of Seventh-day Adventists, Church Hall	No Change
Sudbury	SU1	LNER Sports & Social Club	No Change
Sudbury	SU2	Sudbury Methodist Church Hall	Change (refer to section 3 of cover report)
Sudbury	SU3	Shree Jalaram Jyot Mandir Temple Hall	No Change
Tokyngton	TO1	St Michael the Archangel Church, Hall	No Change
Tokyngton	TO2	Oakington Manor Primary School	No Change
Tokyngton	TO3	Elsley Primary School	No Change
Welsh Harp	WA1	Fryent Primary School	No Change
Welsh Harp	WA2	Woodfield School	No Change
Welsh Harp	WA3	Fryent Primary School	No Change
Welsh Harp	WA4	St Andrew's Church Hall	No Change
Welsh Harp	WA5	Wykeham Primary School	No Change
Welsh Harp	WA6	St Margaret Clitherow RC School	No Change
Wembley Central	WC1	St John the Evangelist Church hall	No Change
Wembley Central	WC2	Barham Primary School	No Change
Wembley Central	WC3	Ealing Road Library	Possible change (refer to section3 of cover report)
Wembley Central	WC4	Ealing Road Library	No Change
Wembley Hill	WH1	Wembley Primary School / St Augustine's Church	No Change
Wembley Hill	WH2	Park Lane Methodist Church Hall	No Change
Wembley Hill	WH3	St Joseph's Wembley Pastoral Centre	No Change
Wembley Park	WK1	Brent Civic Centre (Marriage Room)	No Change
Wembley Park	WK2	Brent Civic Centre (Library)	No Change
Willesden Green	WN1	St Andrew & St Francis Primary School	No Change
Willesden Green	WN2	Gladstone Park Primary School	Change (refer to section 3 of cover report)
Willesden Green	WN3	Pakistan Community Centre	Change (refer to section 3 of cover report)
Willesden Green	WN4	St Mary Magdalen's Catholic Junior School	No Change



### **Appendix 3: Comments Received by the (Acting) Returning Officer to the consultation.**

#### **1. Member of the public**

Brent Indian Community Center is a well established Community Centre at the junction of Willesden High Road, Willesden Bus Garage and Dollishill Station.

Our new Community Centre will be ready in March 2023, which is being built in conjunction with Brent Council, to rebuild a new hall for our Centre and affordable housing above the Community Centre, at 19 Duddenhill Lane, Willesden NW10 2ET.

With the expected increase in the number of residents in the area, we would like to have a discussion on using the new Community Centre for future elections.

The redevelopment is being Project Managed, working with Mr Tanvir Ghani at Brent Council.

#### **2. Cllr. Kanta Mistry (Queensbury Ward)**

I understand that Electoral Services are asking Councillors on Polling Station Review for the next forthcoming GLA elections in 2024 and I would you to take into account my following comments which residents in Queensbury NQY2 Polling District made on polling day and subsequently when we visited them after the May 2022 elections.

Also, survey forms were completed by residents on their views on the Hut Outside the Arch Climbing wall in Burnt Oak polling station which were submitted to Brent Council.

In May 2022 residents living in Dryburgh Gardens, Brinkburn Gardens, even Numbers of Wimborne Drive, part Beverley Drive, Girton Avenue, Holyrood Gardens, North Way, Tewkesbury Gardens and Waltham Drive were transferred from Queensbury Methodist Church on Beverley Drive to the Hut outside the Arch in Edgware.

Most residents used to walk over to their polling station from the above streets which is literally a short distance and forced to travel so much further where parking was a huge issue. Also, Brent incurred additional costs of having to set up a second Portacabin in Edgware with additional staff. Totally, a poor judgement.

- Many residents from the above roads were denied their right to vote as a result of the longer distance.
- Several residents returned back to their homes without voting due to lack of parking.
- Around 300-400 residents living in Dryburgh Gardens, Brinkburn Gardens, even Numbers of Wimborne Drive, part Beverley Drive, Girton Avenue,

Holyrood Gardens, North Way, Tewkesbury Gardens and Waltham Drive were inconvenienced and did not bother to vote because of the distance to travel to the Arch Climbing Wall.

- A possible alternate Polling booth for residents from above streets could be St Annes Church in Waltham Drive a few meters away.
- Many residents did not find it easy to find the Portacabin outside Arch Climbing Wall
- Elderly voters found the Hut not accessible and too far away to walk to, over  $\frac{3}{4}$  mile away
- Residents told us that moving the polling booth to The Arch Climbing Wall unfair and did not get the chance to vote.

As the local Councillor, I would like Brent Council to reassess the move and ensure that the streets mentioned above have their voting polling booth restored back to its original venue or nearby on Waltham Drive. Councillors should be consulted on such an important matter for future.

Please take my above comments and facts on board and ensure that Queensbury NQY2 Polling District residents have easy access to vote is restored.

### 3. **Cllr Paul Lorber (Sudbury Ward)**

1. I refer to the consultation.

During the local elections there was a great deal of confusion for people living in the District and Central Roads and Station Approach etc areas.

This area used to vote at the Sudbury Baptist Church in Station Approach.

If possible this polling station should be reinstated so it can serve:

Central Road  
District Road  
Station Approach  
station Crescent  
Barham Close  
Barham Court  
Fishers Way  
Williams Way  
Part of Harrow Road before the bridge

In due course the new block on the Keelers site will vote here too.

In total this would serve around 700 homes and around 1300 electors so would seem to be justified.

Not only were people confused as Sudbury Town often congested the journey for many residents to the Methodist Church some way away into Sudbury was difficult and many just simply gave up.



#### **4. Cllr Ajmal Akram (Wembley Hill Ward)**

Please may we look into having an additional polling station for Wembley Hill, the area and distance for the current locations need reviewing and should include a 4<sup>th</sup> location.

Please see attached map with the current 3 and the star for the 4<sup>th</sup> location, Some roads result in over 1 mile from the closest location, for example Meadow Way or parts of St Johns Road?

We need to look at more schools and other locations to ensure the distance is within walking distance to all, at the moment the distance does not work for the ward.

#### **5. Cllr Jayanti Patel (Queensbury Ward)**

Further to an email from Natalie Zara last week that Brent Electron services are reviewing the polling station for the coming GLA election in May 2024. Please find below comments we received from resident in Queensbury Ward on polling day in May 2022. A survey was also carried out by Brent Council that residents were asked to fill in, on their views at the Hut Outside the Arch Climbing wall in Burnt Oak polling station.

Voting should be as easy and accessible as possible, and in many cases it is. But in the election on 5<sup>th</sup> May 2022 unnecessary barriers were erected for people to register vote in person. The result is a severely compromised democracy that did not reflect the will of the people. Our democracy works best when all eligible voters can participate and have their voices heard.

Queensbury Methodist Church always had two polling Booths for over 10 years inside the church hall. Most of the residents walked over to their polling stations from nearby streets, and if they can by car there was ample parking spaces outside and in the Church car park.

Hut Outside the Arch climbing wall always had one cabin to vote for over 10 years, so there was no need for Brent council have to have two Cabins at additional costs.

A lot of residents in QY2 polling district were denied their voting right due to no parking availability at the Hut Outside the Arch Climbing Wall, they returned back to their homes and did not vote. Also, the distance to travel disenfranchised a lot of residents denying them their democratic right to vote.

Around 300 to 400 residents living in streets near Queensbury Methodist Church did not bother to vote because of the distance to travel from Dryburgh Gardens, Brink burn Gardens, Wimborne Drive, Beverley Drive, Girton Avenue, Holyrood Gardens, North Way, Tewkesbury Gardens, Waltham Drive. A possible alternate Polling booth for residents from these streets could be St Annes Church in Waltham Drive a few meters away.

Please find attached a report we prepared after the May 2022 election that we want electoral services to consider so we do not disfranchise residents from voting in Queensbury Ward.

6. **Cllr Janice Long (Willesden Green Ward)**

According to the street index Geary Road is in WN2 apart from 153-155 which are in WN3. More logical for them to be in WN2 so the whole of Geary Road is in one polling district.

Park Avenue North.

> 111-121 are in WN2

> 69 - 109 and 38 - 122 are in WN3.

It would be more logical for 111 - 121 to be in WN3 so the whole of Park Avenue North is in one polling district.

WN1

Two community centres are opening soon on Dudden Hill Lane, the Learie Constantine Centre and Brent Indian Community Centre. Several years ago the WN1 area was split in two down Belton Road and votes in the western half voted at the Learie Constantine Centre. Now voters use St Andrews & St Francis Primary school. Originally the polling station was via the Belton Road entrance but now it is in Villiers Road, quite a distance. So consideration should be given to the use of one of the new community centres as a polling station.

7. **Sent on behalf of Stuart Love, CEX of Westminster Council**

Thank you for sending us details of your review, the content of which is noted.

On the basis that Stuart will be the (Acting) Returning Officer for the Queen's Park and Maida Vale constituency which includes 3 LB Brent wards (Harlesden & Kensal Green, Kilburn, Queens Park ) we kindly ask that you notify us if any changes are made to the designated polling places within the 3 wards before the next general election takes place or if any other issues arise upon which you believe Stuart should be sighted.

8. **Sent on behalf of Alex Dewsnap, Head of Paid Service (Managing Director), London Borough of Harrow**

Thank you for getting in touch and providing us with information regarding your Polling District and Polling Places review.

As Alex Dewsnap will be the Acting Returning Officer for the Harrow East Constituency which includes the LB Brent Ward of Queensbury, we would be grateful if you could notify us if any changes are made to the designated Polling Places of the ward ahead of the next UK Parliamentary General Election.

Please could you also let us know if there are any other issues which arise that should be brought to Alex's attention.